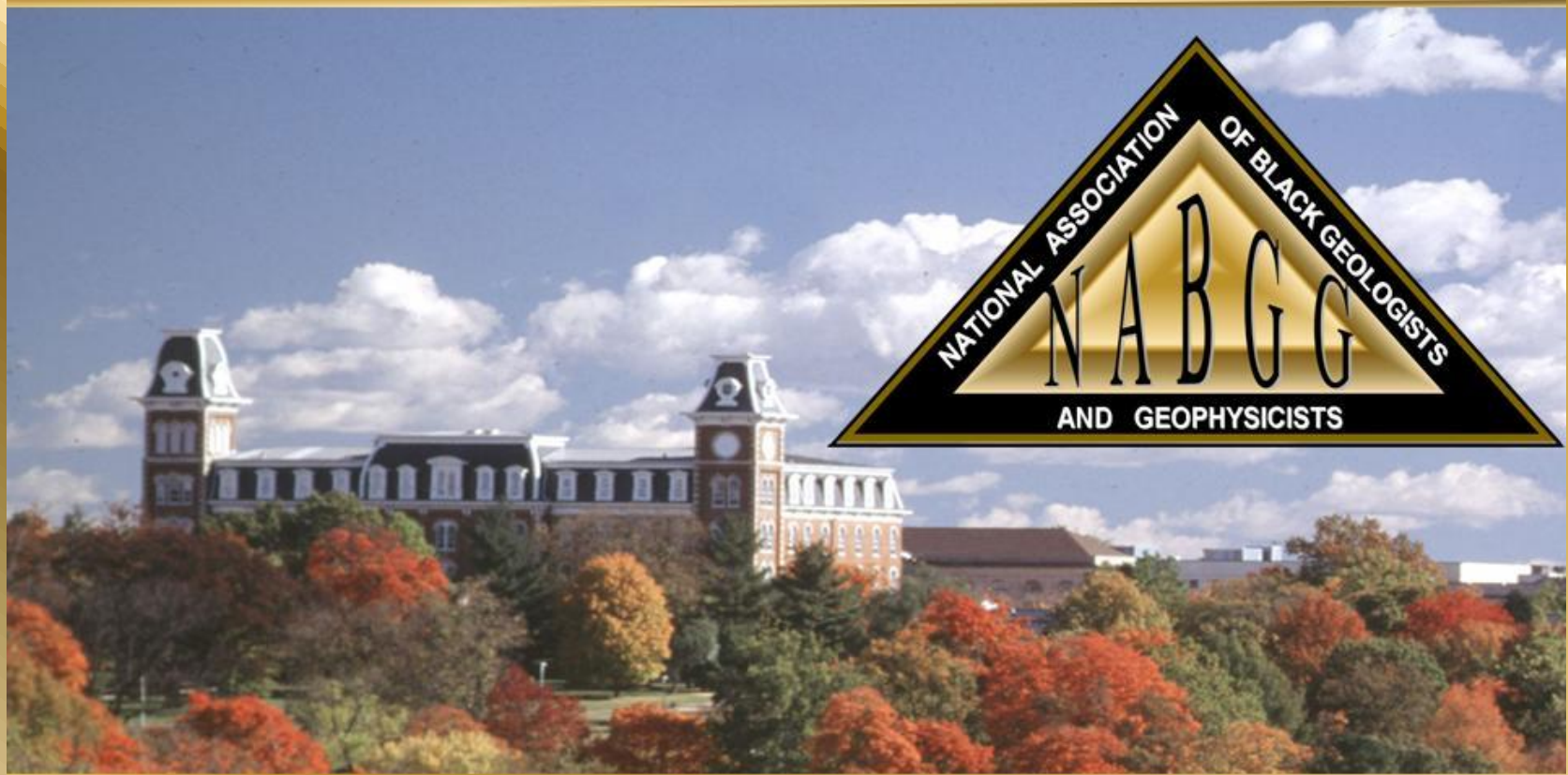


2008 CONFERENCE LOCATION MAPS & CONFERENCE LAYOUT

NABGG 2009 TECHNOLOGY CONFERENCE "SUSTAINING THE GEOSCIENCES"



SEPTEMBER 9-12, 2009

FAYETTEVILLE, ARKANSAS

2009 CONFERENCE METRO MAP

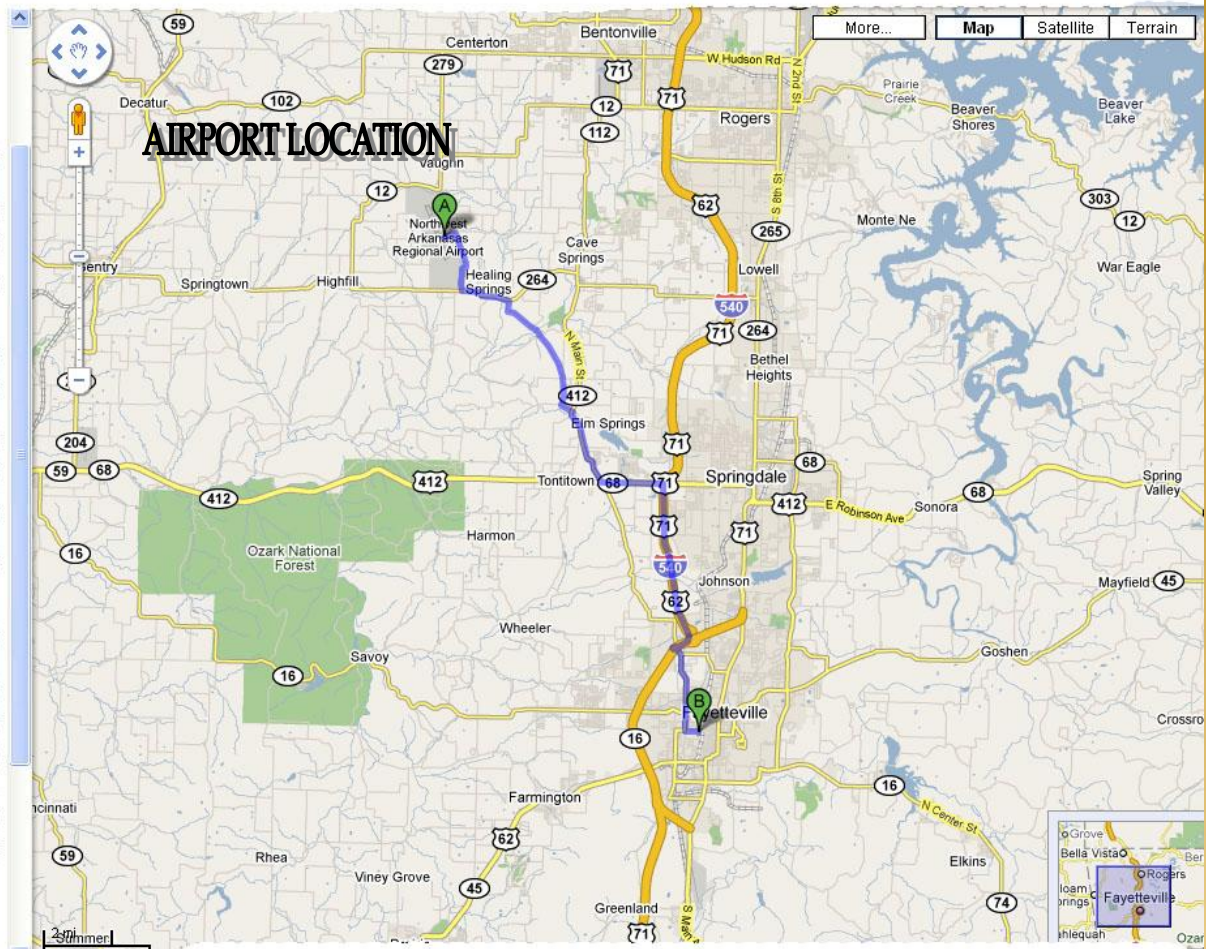
Directions from Northwest Regional Airport (XNA) to Carnall Hall on the University of Arkansas

Driving directions to Inn At Carnall Hall
20.5 mi – about 43 mins

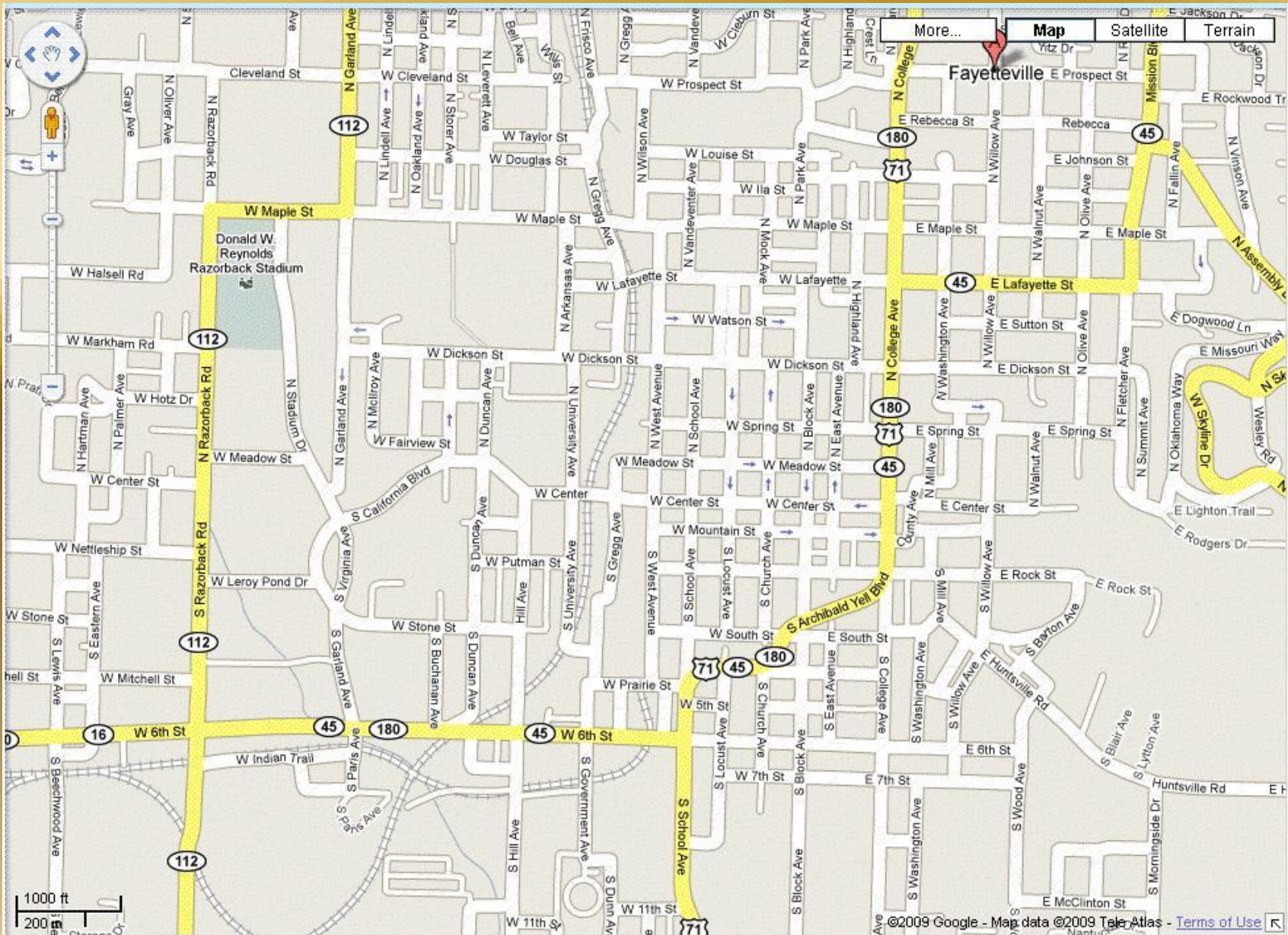
A Northwest Arkansas Regional Airport

1. Head **east** on **Tower Dr** toward **Regional Ave** 0.4 mi
2. Turn **right** at **Regional Ave** 1.2 mi
3. Turn **left** at **Airport Blvd** 0.7 mi
4. Turn **left** at **W Hwy-264/AR-264/Healing Springs Rd** 1.5 mi
Continue to follow W Hwy-264/AR-264
5. Turn **right** at **Colonel Myers Rd** 1.6 mi
6. Continue on **County Rd-71/Robbins Rd** 1.9 mi
Continue to follow Robbins Rd
7. Continue on **Weston St** 0.3 mi
8. Turn **left** at **Water Ave** 0.4 mi
9. Turn **right** at **AR-112/S Elm St** 2.4 mi
Continue to follow AR-112
10. Turn **left** at **AR-68/E Henri de Tonti Blvd/US-412** 1.8 mi
Continue to follow AR-68/US-412
11. Turn **right** to merge onto **I-540 S/US-62 S/US-71 S** 4.5 mi
12. Take the exit onto **I-540 S** 0.7 mi
13. Take exit **66** for **AR-112** 0.3 mi
14. Turn **right** at **AR-112/AR-180/Hall Ave** 2.6 mi
Continue to follow AR-112
15. Turn **left** at **W Maple St** 0.4 mi
16. Turn **right** at **N Arkansas Ave** 141 ft

B Inn At Carnall Hall
465 N Arkansas Ave
Fayetteville, AR 72701-4108



2009 CONFERENCE CITY MAP



2009 CONFERENCE PROXIMITY MAP



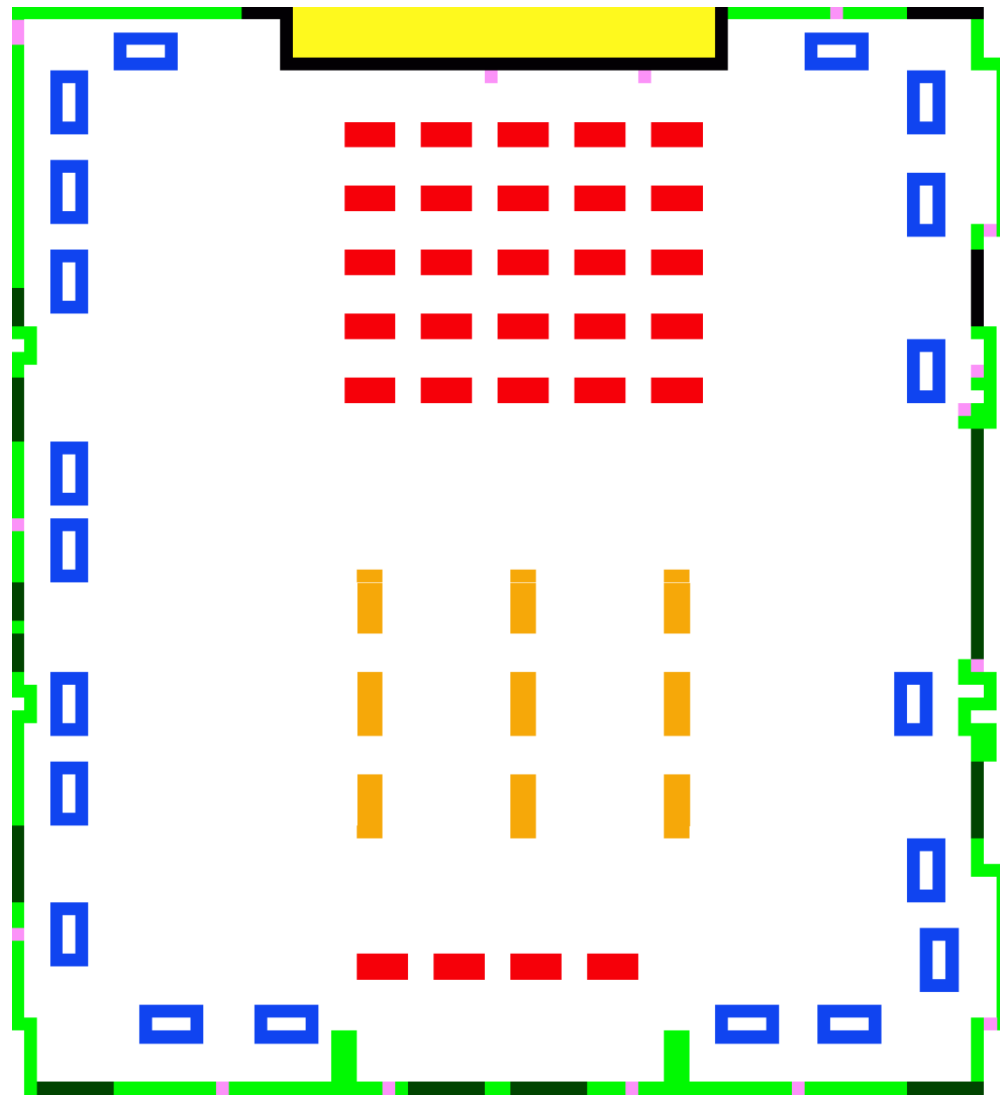
Carnall Hall (CARN) is located at the corner of Maple and Arkansas (in green).

The conference room (Ballroom) (ARKU) is located on the 5th floor of the Arkansas Union. You may enter at the east side of the building and walk through to the west side of the building and up to the 5th floor and the Ballroom will be directly in front of you.

The Chancellor's residence is located on the Northwest corner of Maple and Razorback.

The Geosciences office is located in Ozark Hall (OZAR) Room 113.

2009 CONFERENCE FLOORPLAN



YELLOW REGION - TECHNICAL SESSION STAGE

BLUE RECTANGLES - BOOTH LOCATIONS

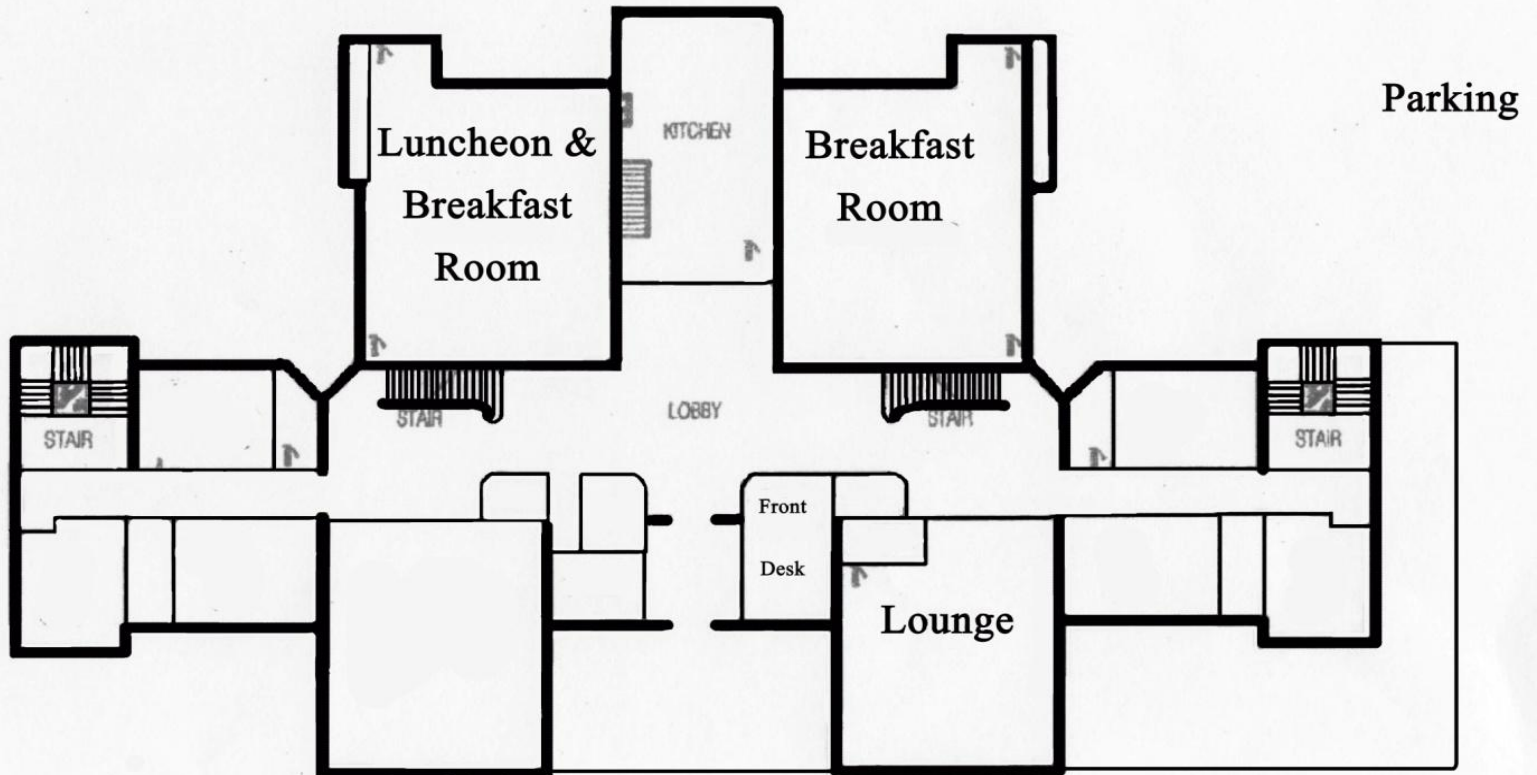
ORANGE RECTANGLES - POSTER BOARDS

RED RECTANGLES - BREAK TABLES

PINK SEGMENTS - ELECTRICAL OUTLETS

RED ZONES - CONFERENCE SEATING

2009 CONFERENCE LUNCHEON FLOORPLAN



Carnall Hall

